

## tinyCam Monitor Setup Instructions (Android Only)

First: Download the tinyCam Monitor app from the Google Play Store.

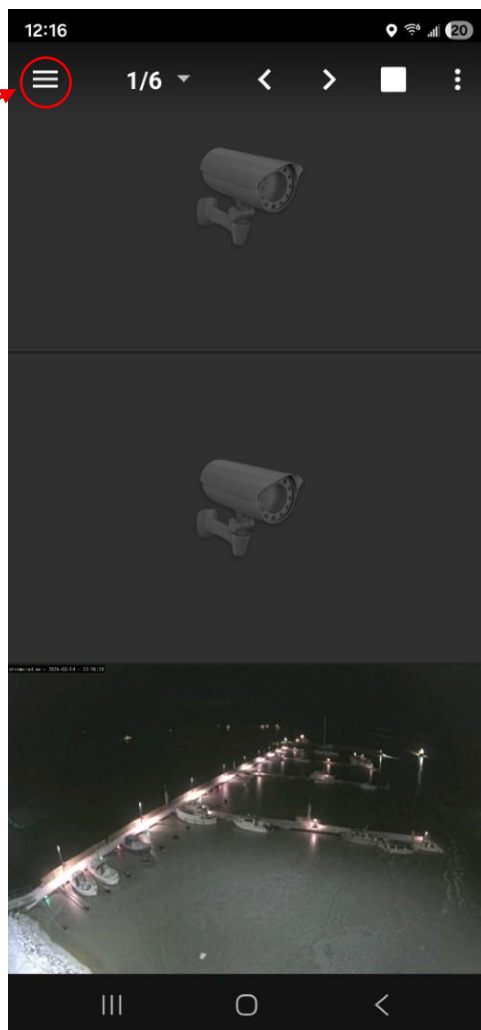
Note: This app is free to use, but contains ads. Optionally, you may opt to pay a One-time fee of \$3.99 and download the Pro version to remove ads and gain some additional functionality (not necessary).

[Click Here to Download tinyCam from the Play Store](#)

Then: Configure the tinyCam app to view your specific camera using the Port Number, Camera Brand & Model, Username & Password, provided in the email we sent you.

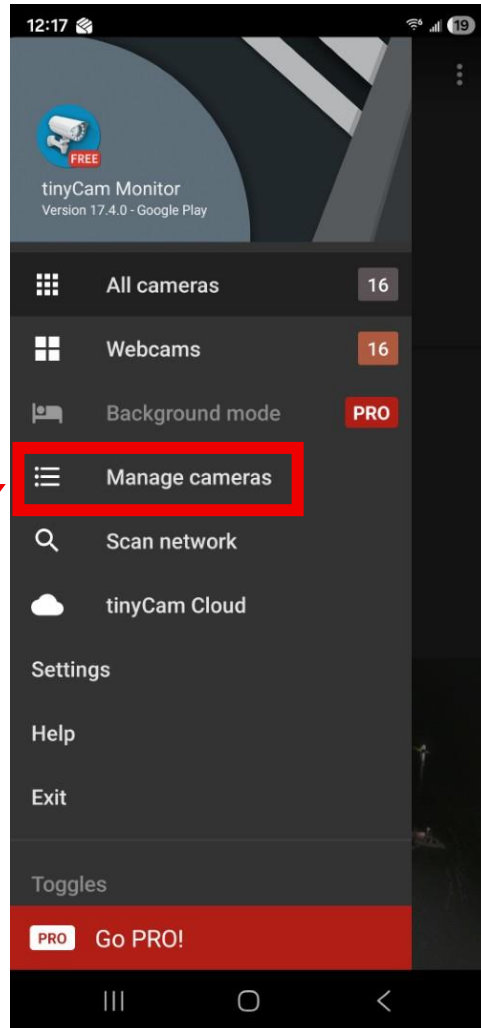
### Step 1: Open the tinyCam app and select the hamburger menu (3-lines)

Select Menu

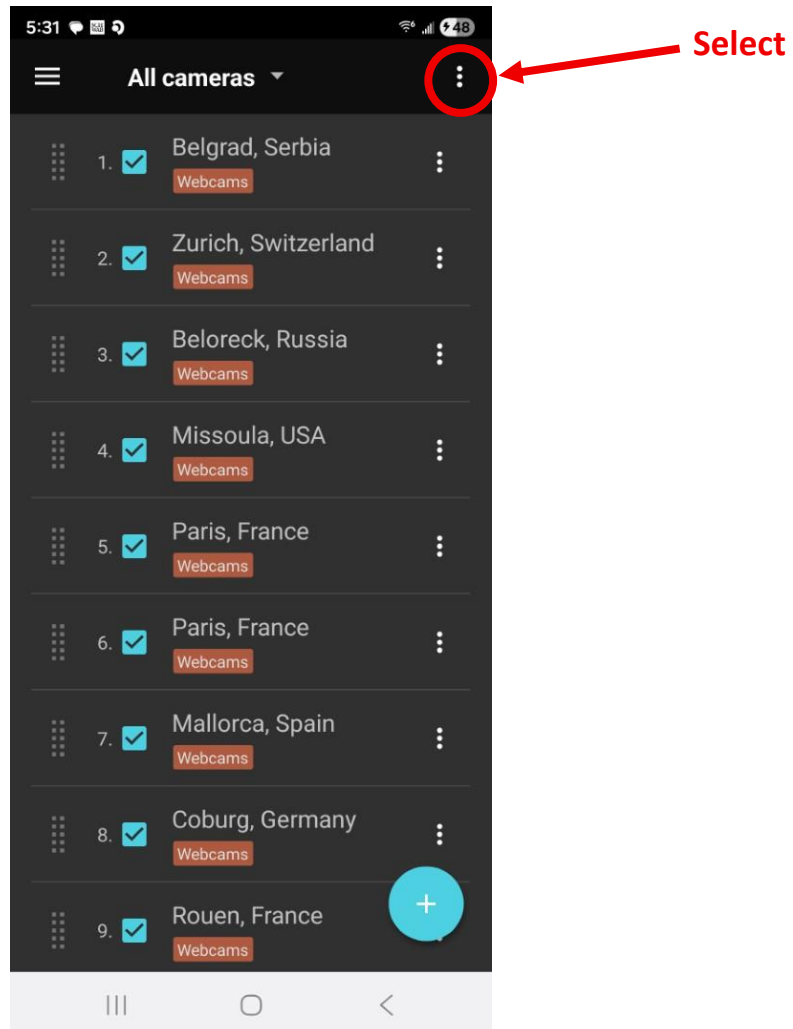


## Step 2: Select “Manage cameras”

Select



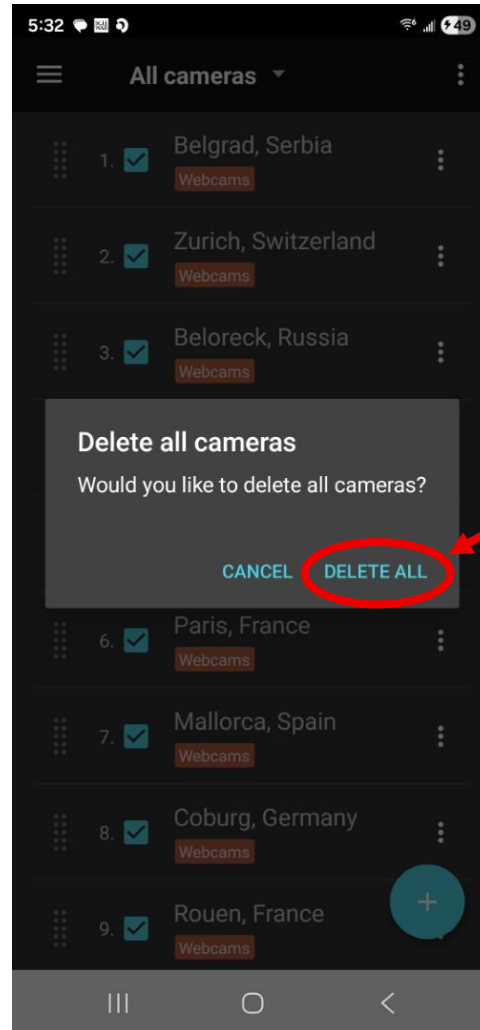
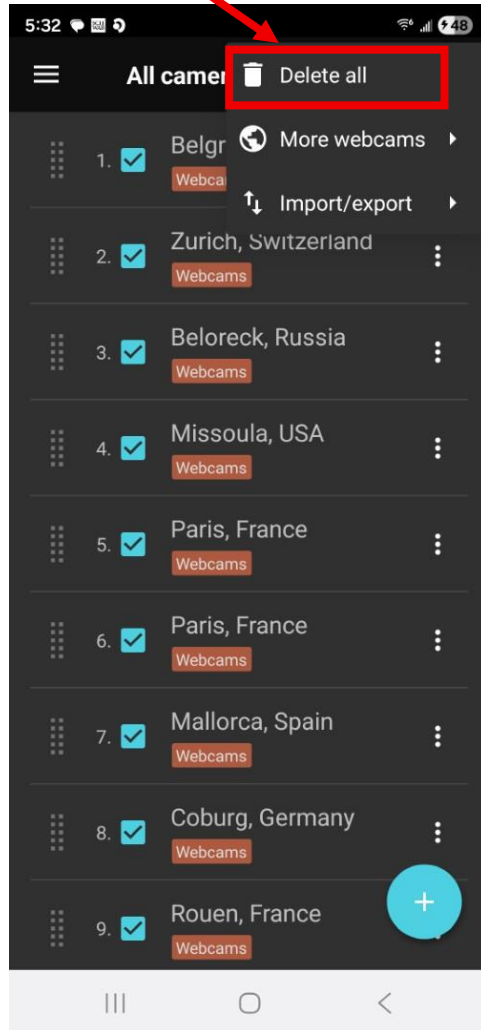
### Step 3: Select 3-Dots to open menu



## Step 4: Delete the Cameras

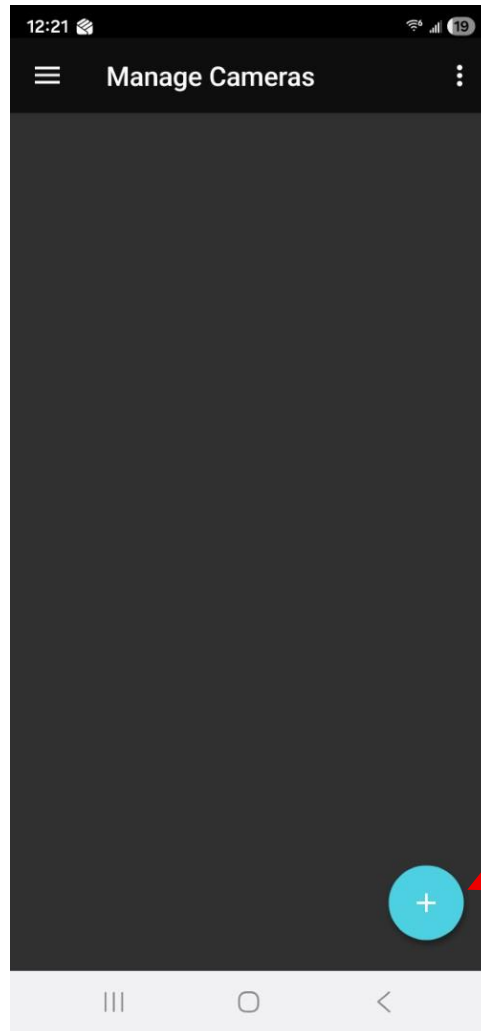
(tinyCam comes with some cameras pre-installed. We can get rid of them)

Select  
Delete All



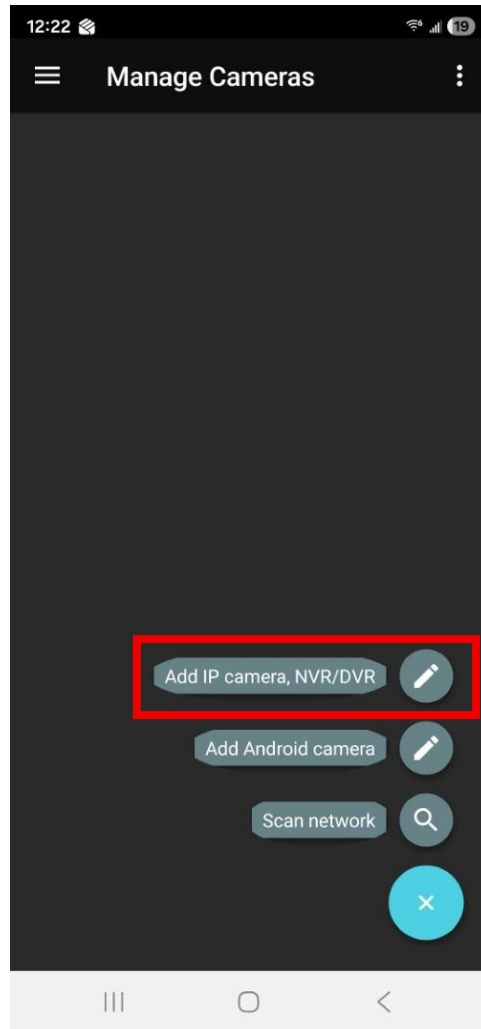
Select  
Delete All

**Step 5: After Deleting the Cameras, Select the [Blue Dot](#) to Add a Camera**



**Select Blue Dot**

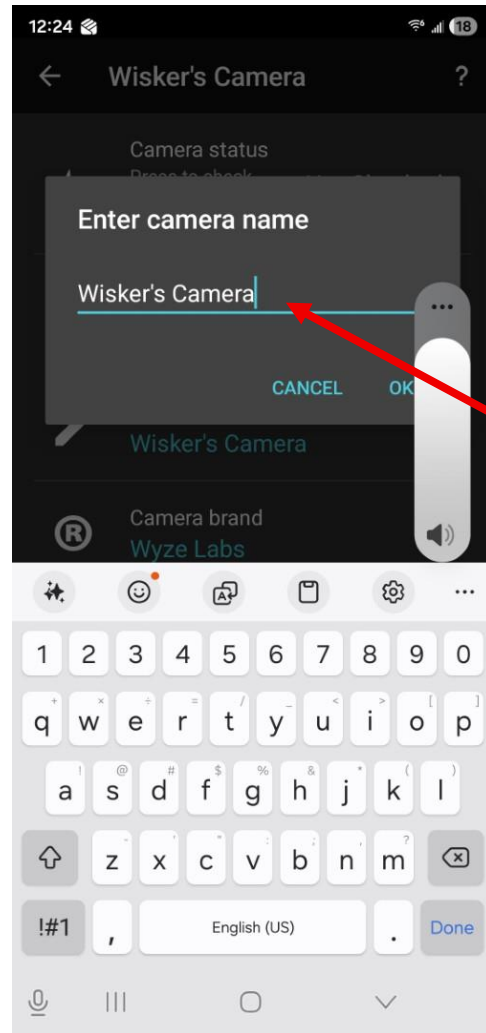
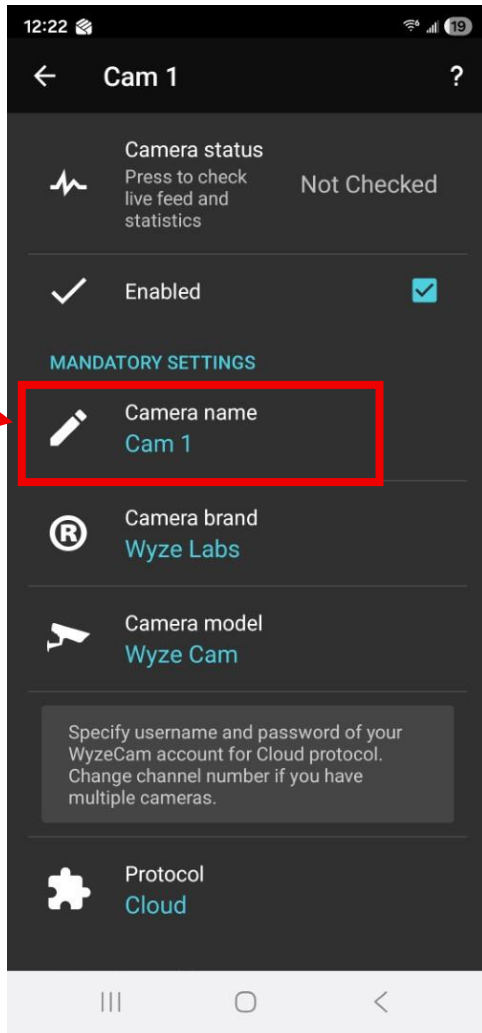
**Step 6: Select “Add IP camera, NVR,DVR”**



**Select “Add IP camera, NVR,DVR”**

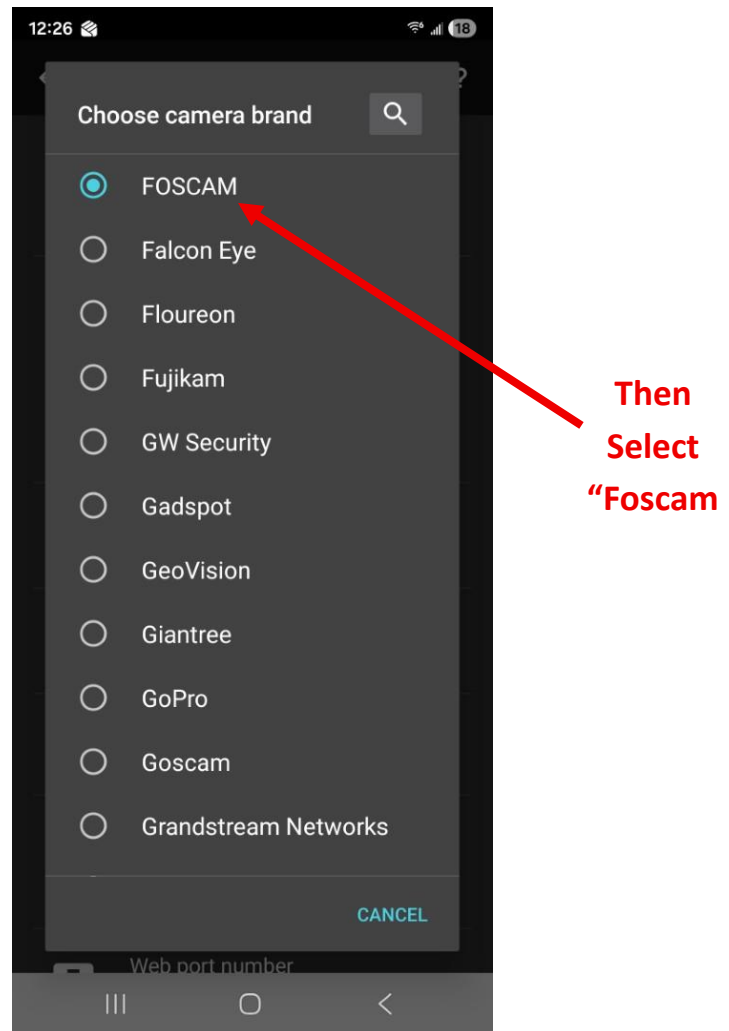
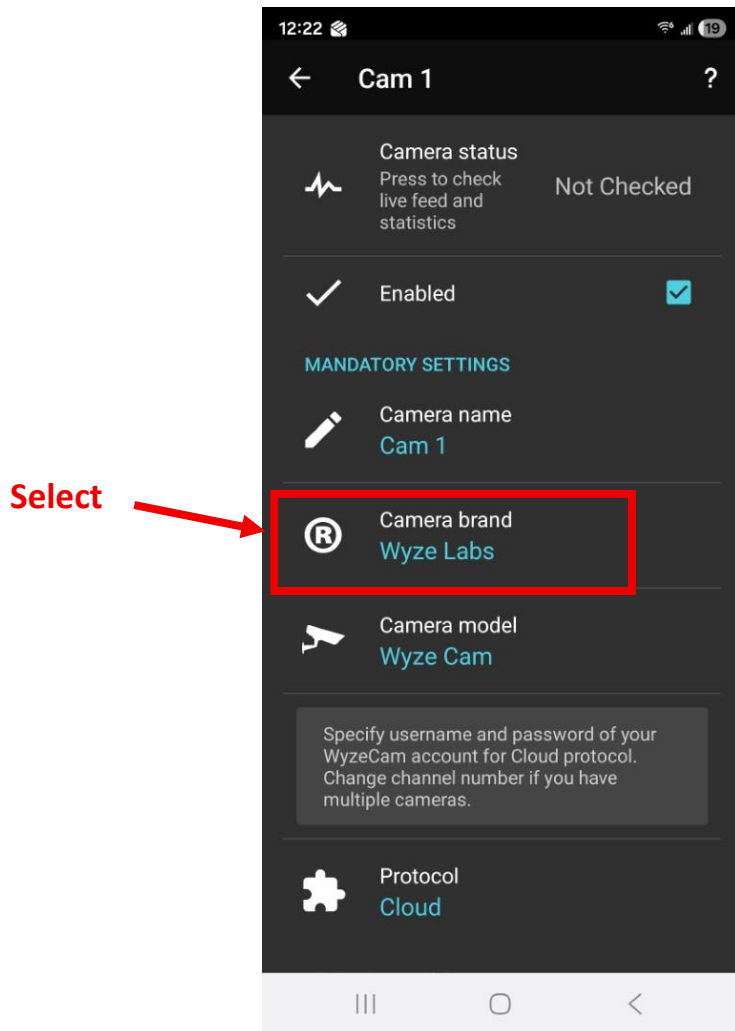
**Step 7: Enter a Name for Whatever You Want to Call Your Camera (e.g. cat's name)**

Select

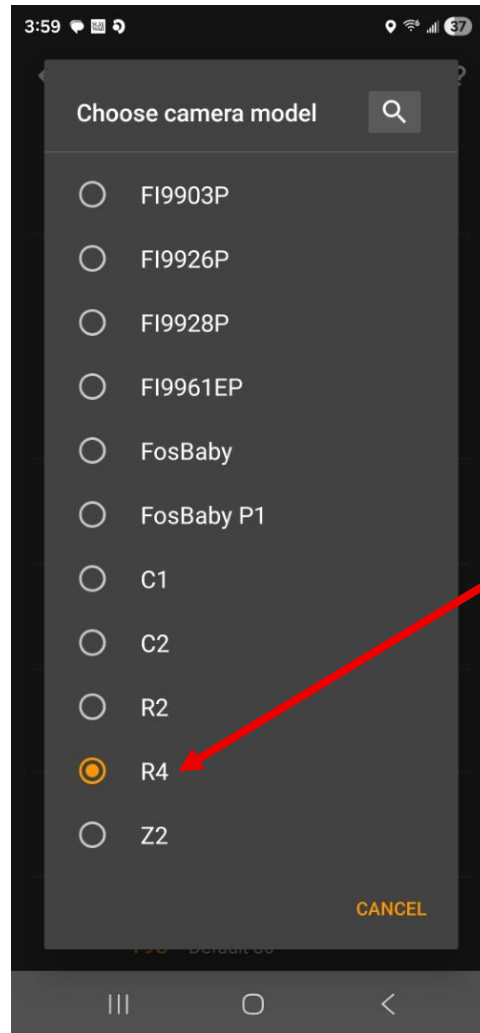
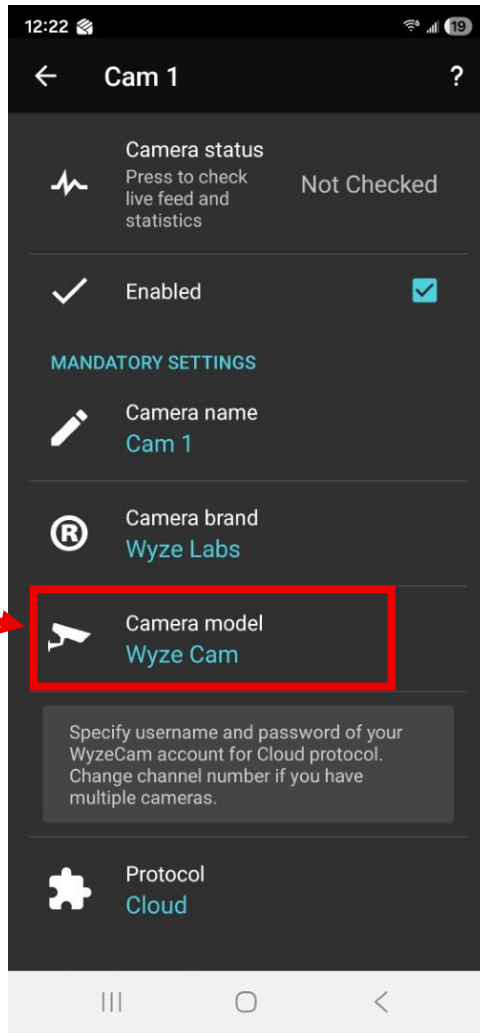


Then Enter  
a Name

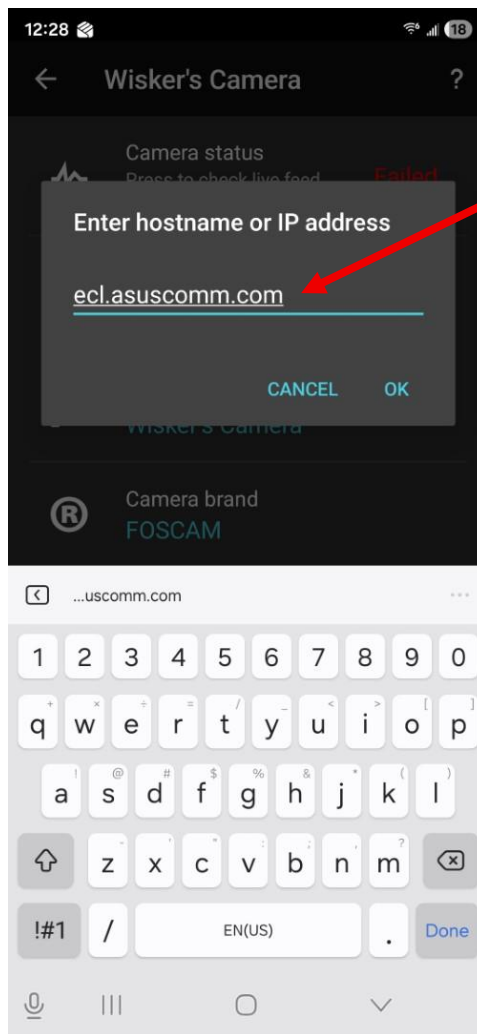
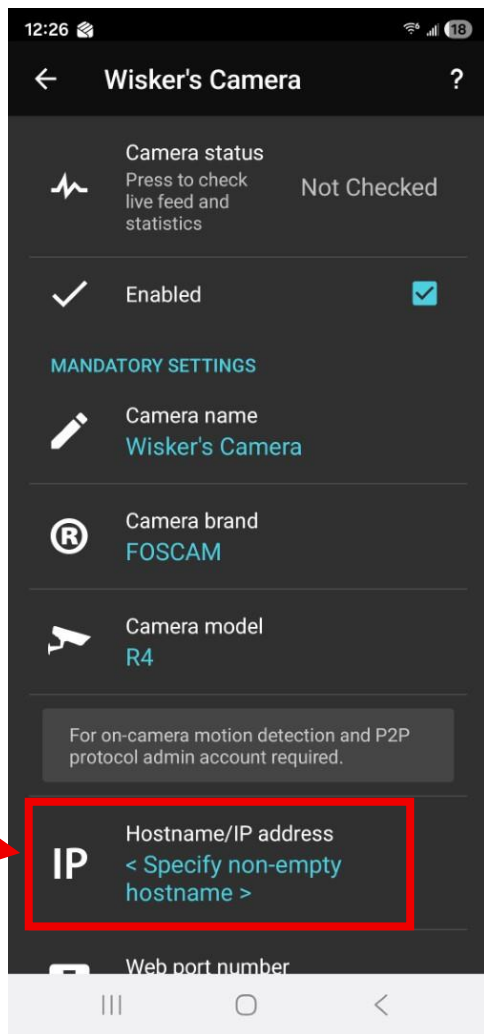
## Step 8: Select Camera Brand "Foscam"



**Step 9: Set Camera model as Specified in Email We Sent You (either R4, C2 or 19831W)**



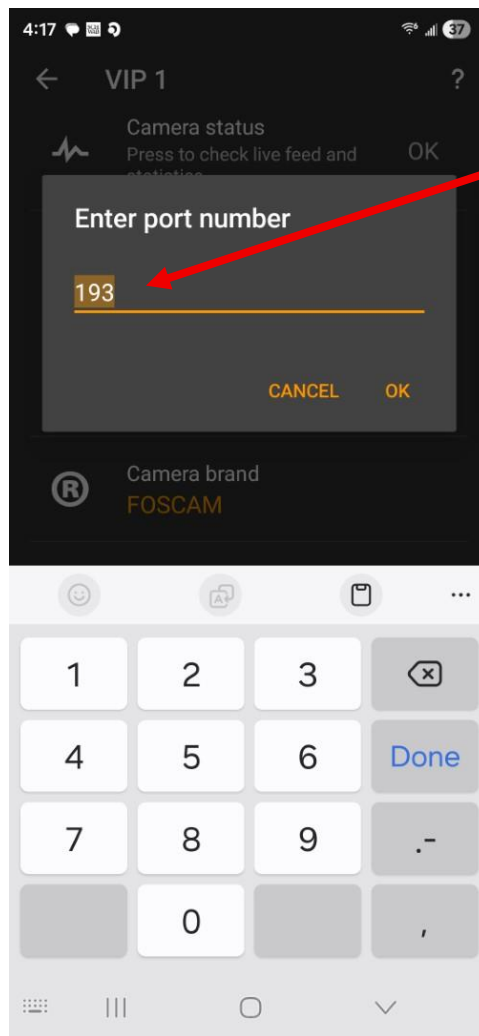
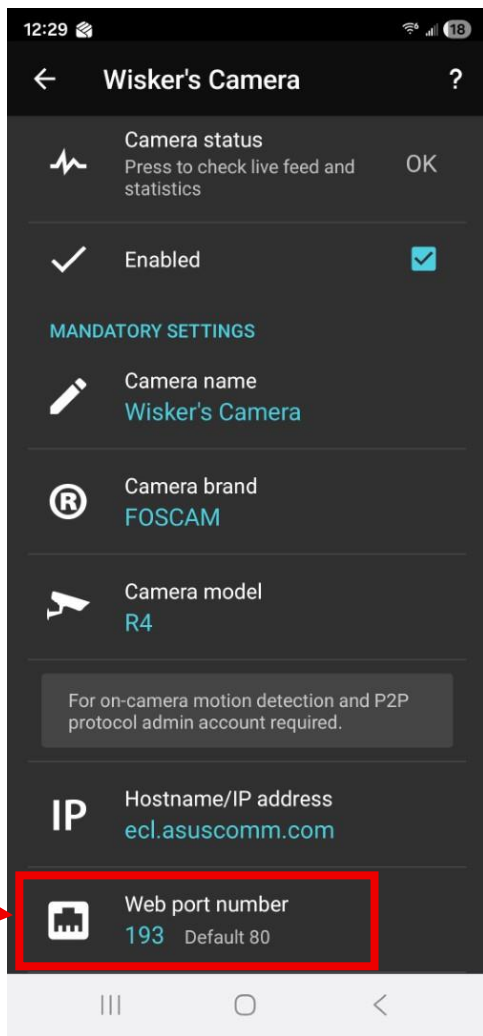
## Step 10: Specify Host Name



Enter Hostname  
ecl.asuscomm.com

Select

## Step 11: Enter the Port Number Specified in the Email We Sent You

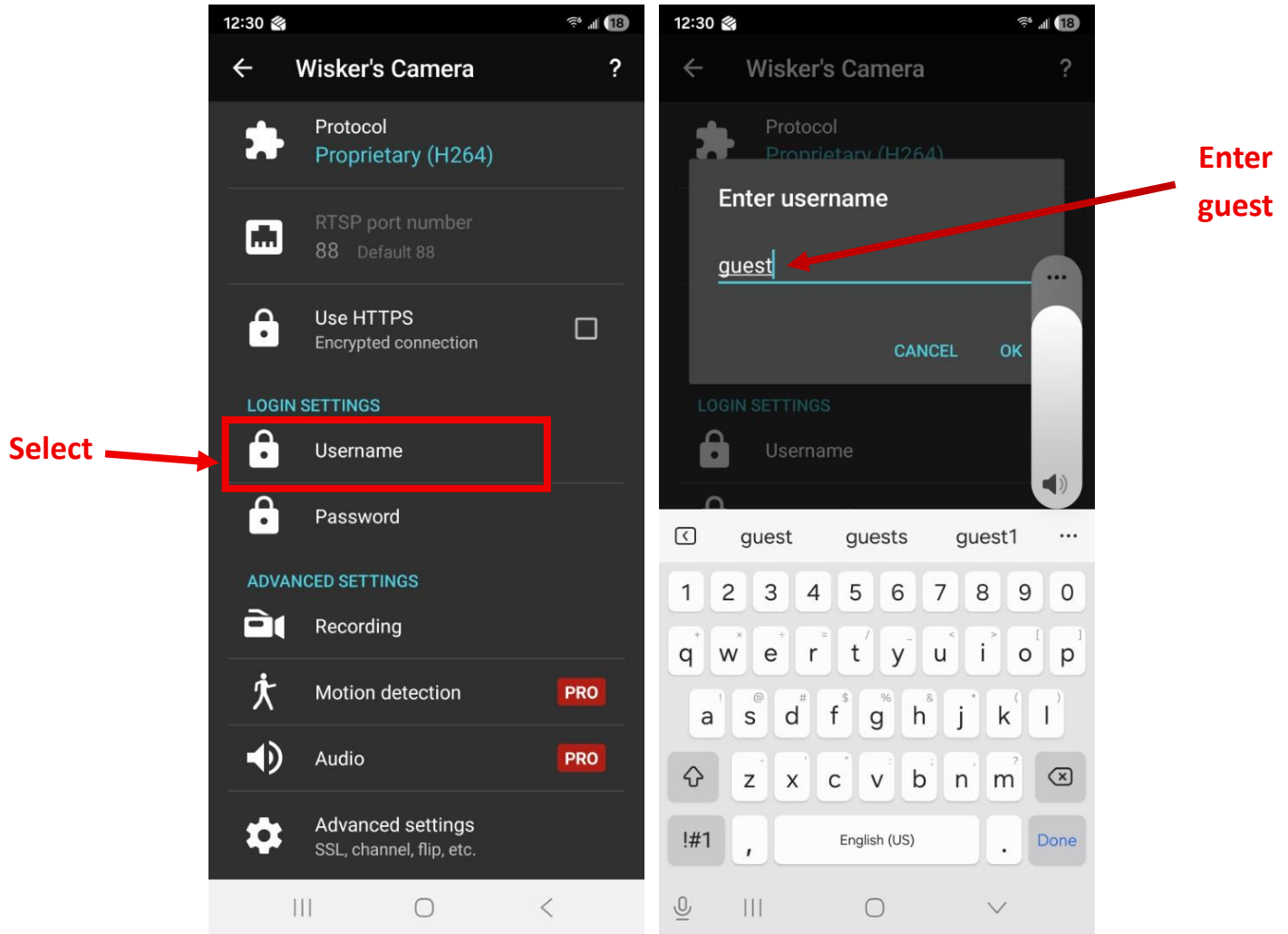


**Enter  
Whatever  
Port Number  
We Sent in  
Email**

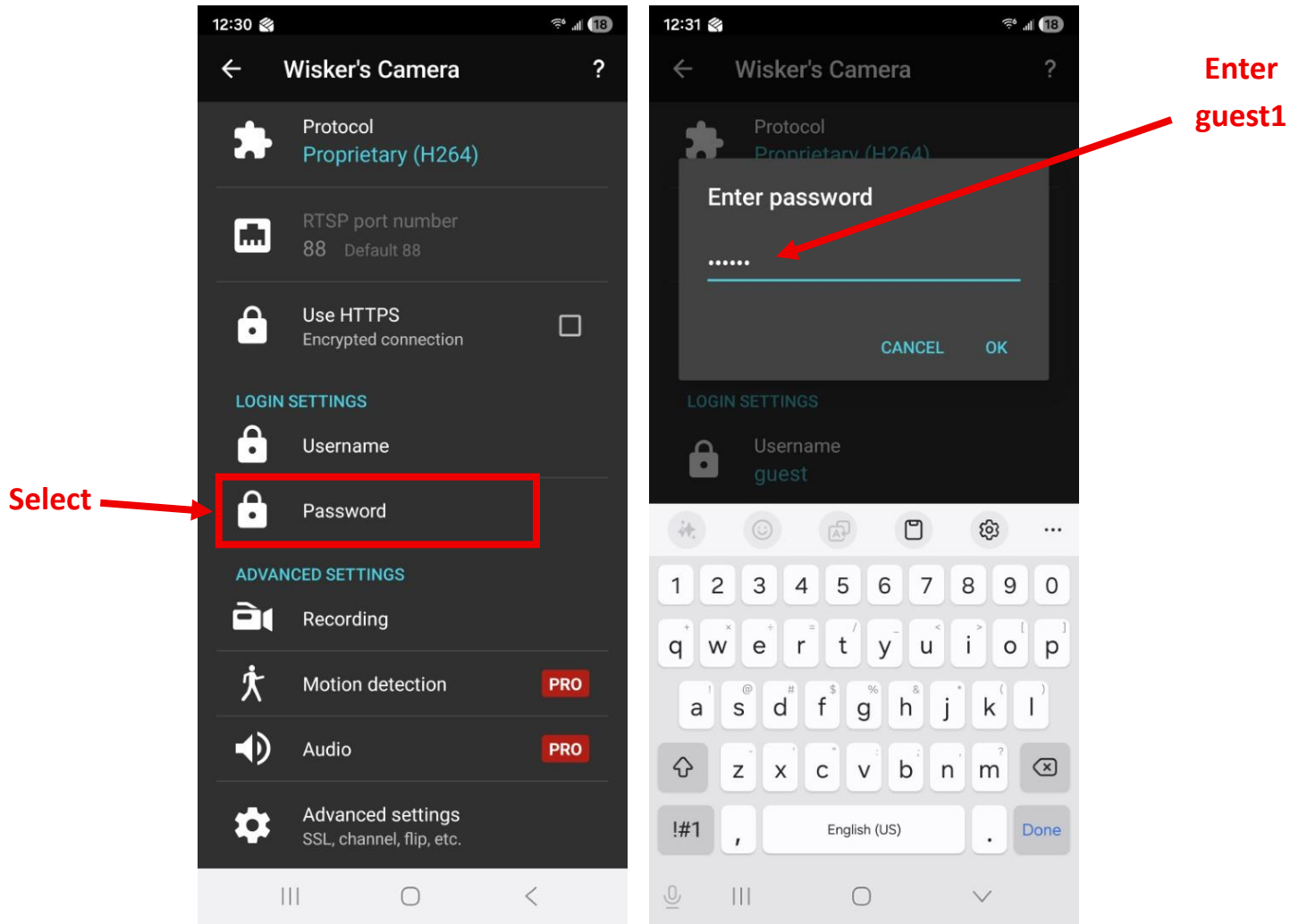
**Select**

Our email will tell you whether or not your camera requires a Username & Password. **If your camera doesn't require a Username & Password, skip Steps 12 & 13.**

### Step 12: Enter Username "guest" (only if necessary)

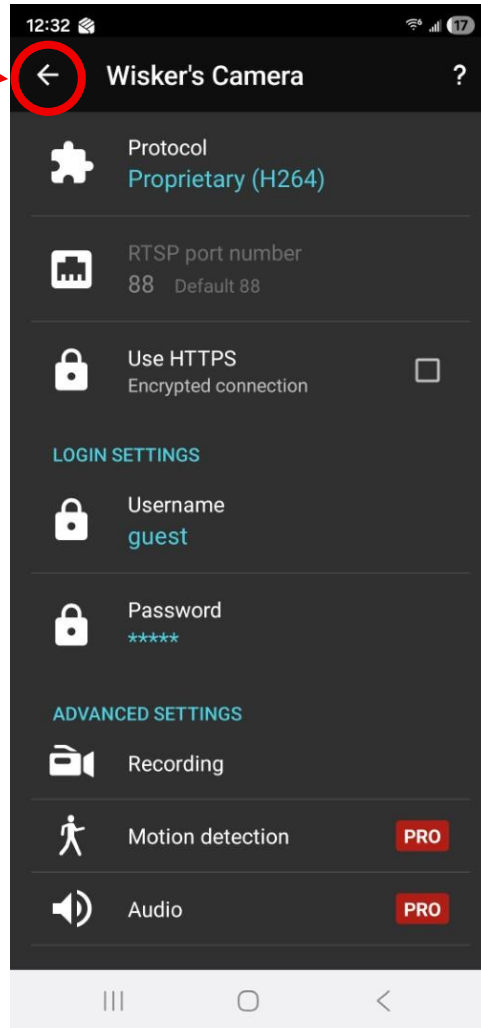


### Step 13: Enter Password (only if necessary). Password is guest1



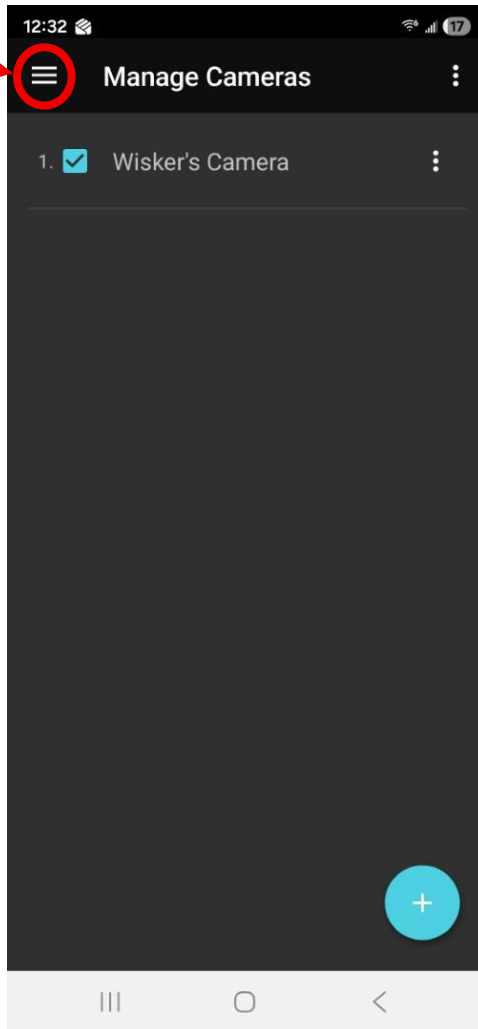
## Step 14: Select the Back Arrow

Select

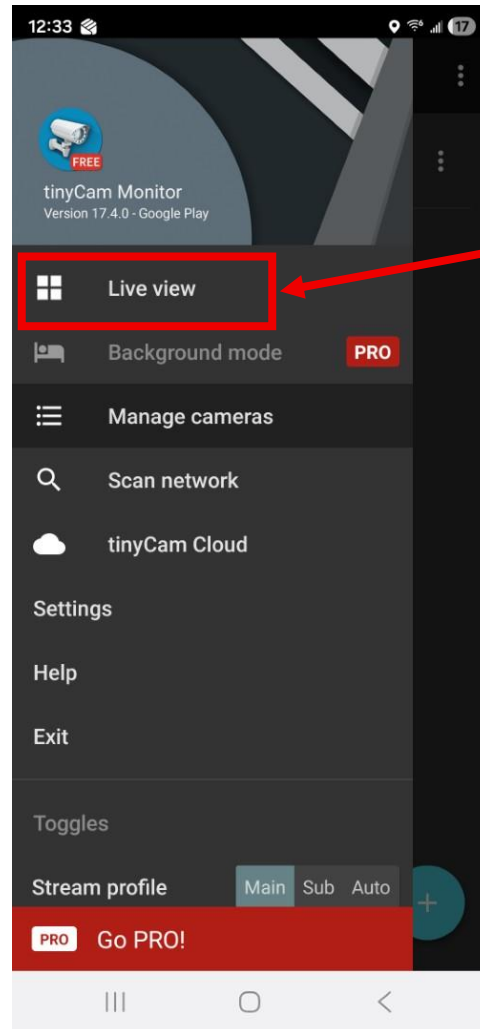


## Step 15: Go to Camera Viewing Screen

Select



Then Select  
"Live View"



You Should Now See Your Camera!

